

## RAMS-2007 20 GAUGE STAND ALONE POWER FLANGER



Dealer:  
Address:  
City:  
State/Zip:  
Phone:



### Specifications

**CAPACITY:** 20 GA. MAX. - 24 GA.  
MIN. MILD STEEL

**APPROXIMATE SPEED:** 25 FPM

**DIMENSIONS:**  
36" L X 17-1/2" W X 34" H

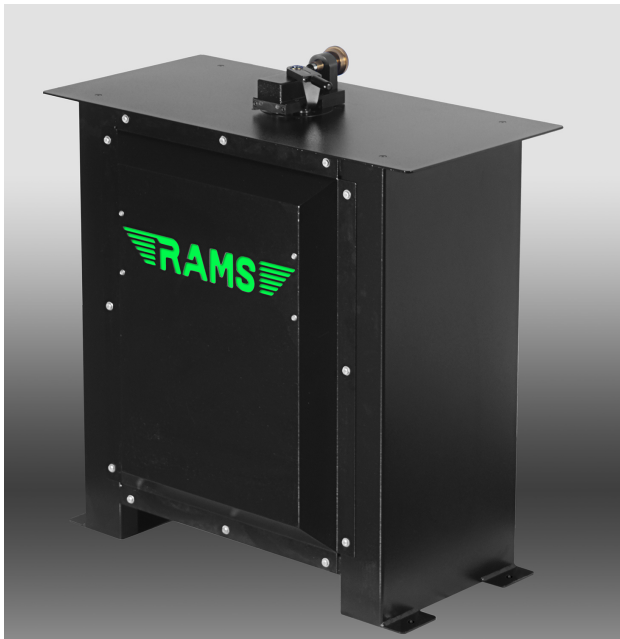
**APPROXIMATE WEIGHT:** 204 LBS.

This unit comes mounted in a heavy duty cabinet. The RAMS-2007 Power Flanger will form a 7/32" right angle flange on either straight or curved pieces. It has an adjustable "auto guide" which can be set to automatically hold the metal for turning the flange on both, a radius or a straight piece. This unit features Torrington Needle Bearings, hardened and ground shafts.

# RAMS-2007-AA 20 GA STAND ALONE POWER FLANGER W/ Auto Adjust



Dealer:  
Address:  
City:  
State/Zip:  
Phone:



## Specifications

**CAPACITY:** 20 GA. MAX. - 24 GA.  
MIN. MILD STEEL

**APPROXIMATE SPEED:** 25 FPM

**DIMENSIONS:**  
36" L X 17-1/2" W X 34" H

**APPROXIMATE WEIGHT:** 204 LBS.

The RAMS-2007-AA Stand Alone Power Flanger W/ Auto Adjust Feature will form a 7/32" right angle flange on either straight or curved pieces. The Auto Adjust feature self adjusts from 20ga-26ga saving time and money in addition to eliminating incorrect adjustments. It has an adjustable "auto-guide", which can be set to automatically hold the metal for turning the flange on both a radius or a straight piece. This unit features Torrington Needle Bearings, hardened and ground shafts.

This unit comes mounted in a heavy duty cabinet with a Hammertone Black Finish