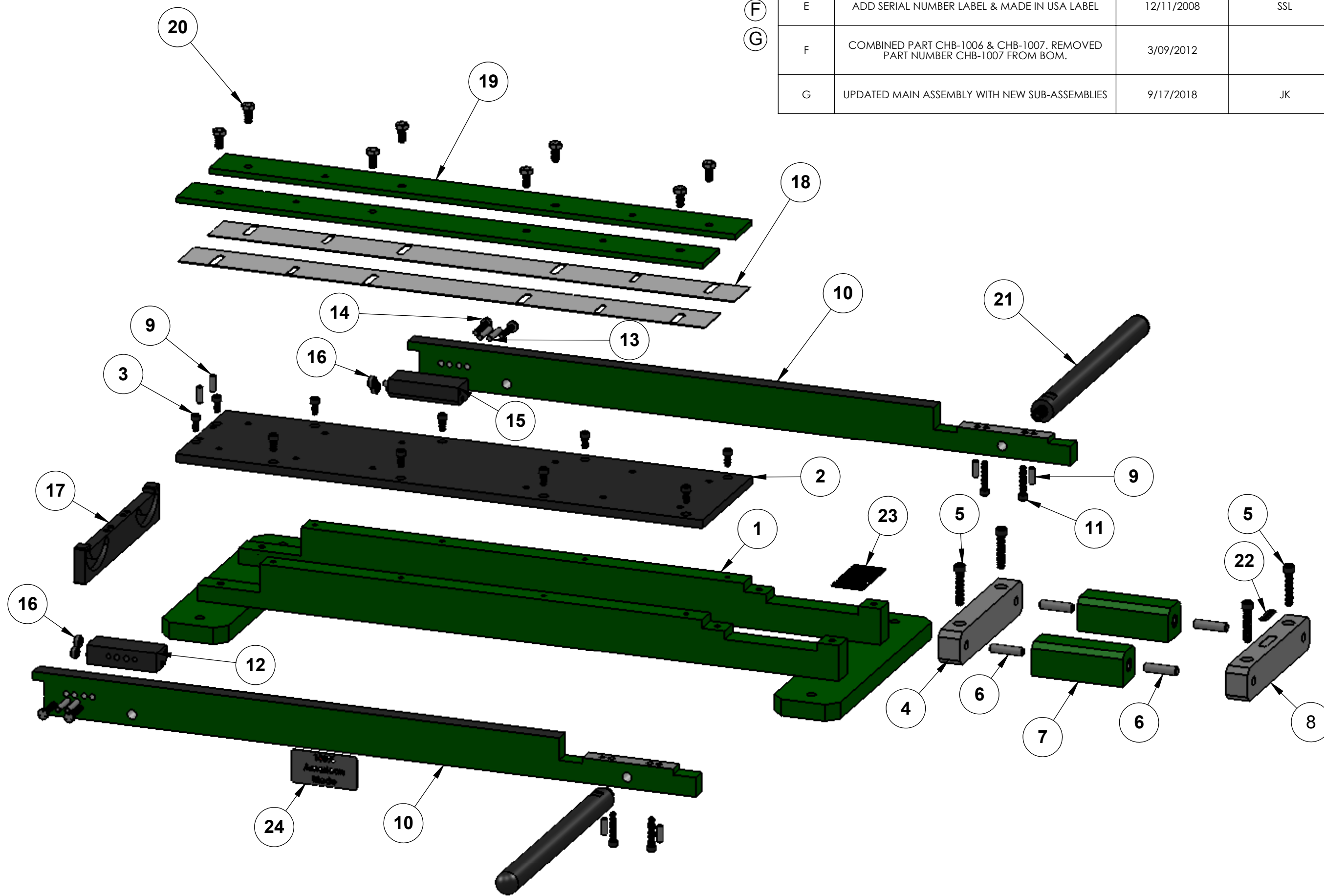


ITEM NO.	PART NUMBER	DESCRIPTION	QTY.
1	CHB-2005-1		1
	CHB-1001	LEG	2
	CHB-1008	FOOT PAD	2
	91251A624	SHCS BLACK OXIDE 3/8-16 X 1.000	4
2	CHB-1005	MAIN PLATE	1
3	91251A537	SHCS BLACK OXIDE ALLOY STEEL 1/4-20 x 1/2	10
4	CHB-1009	PIN BLOCK	1
5	91251A587	SHCS BLACK OXIDE 5/16-18 X 1-1/2	4
6	98381A628	ALLOY STEEL DOWEL PIN 3/8 x 1-1/2	4
7	CHB-2005-4		2
	CHB-1004	BEARING BLOCK	1
	B-610	BEARING: 3/8 ID X 9/16 OD X 5/8 WIDE	2
8	CHB-1009-001	PIN BLOCK W/CUTOUT	1
9	98381A540	ALLOY STEEL DOWEL PIN 1/4 X 3/4	6
10	CHB-1006	BENDING BAR	2
11	91251A544	SHCS BLACK OXIDE ALLOY STEEL 1/4-20 x 1-1/4	4
12	CHB-2005-2		1
	CHB-1011	PIN BLOCK	1
	98381A540	ALLOY STEEL DOWEL PIN 1/4 X 3/4	2
13	98381A544	ALLOY STEEL DOWEL PIN 1/4 x 1-1/4	4
14	92865A544	HHCS ZN 1/4-20 X 1.1/4	4
15	CHB-2005-3		1
	CHB-1011	PIN BLOCK	1
	98381A540	ALLOY STEEL DOWEL PIN 1/4 X 3/4	2
16	CHB-1014	BEARING ROLLER	4
17	CHB-1010	SLOTTED PLATE	1
18	CHB-1002	BLADE	2
19	CHB-1003	TOP PLATE	2
20	92865A580	HHCS ZINC 5/16-18 X 5/8	8
21	CHB-2005-5		2
	CHB-1013	HANDLE	1
	91375A718	BLACK OXIDE CUP POINT SET SCREW 1/2-13 X 1-3/4	1
22	20 GA MAX	LABEL, 20 GA MAX	1
23	RAMS 2005	SERIAL No. PLATE	1
24	Made in the USA	LABEL, MADE IN USA	1

REV.	DESCRIPTION	DATE	APPROVED
A	UPDATED FOR RELEASED	2/15/2006	JAS
B	DELETE CHB-1024 AND REPLACED WITH CHB-1025	3/21/2007	RAF
C	CHANGED QUANTITY OF CHB-1009 FROM 2 TO 1/ ADD CHB-1009-001 QUANTITY OF 1 EACH / ADD 20 GA. MAX LABEL QUANTITY OF 1 EACH	5/31/2007	RAF
D	REMOVED 1/4 X 1" DOWEL PIN / CHANGED ITEM 20 TO 1-1/4 LONG	9/28/2007	WH
E	ADD SERIAL NUMBER LABEL & MADE IN USA LABEL	12/11/2008	SSL
F	COMBINED PART CHB-1006 & CHB-1007. REMOVED PART NUMBER CHB-1007 FROM BOM.	3/09/2012	
G	UPDATED MAIN ASSEMBLY WITH NEW SUB-ASSEMBLIES	9/17/2018	JK



RAMS-2005 24" CHEEK BENDER

DIMENSIONS ARE IN INCHES
 TOLERANCES:
 FRACTIONAL ± 1/16
 ANGULAR: MACH ± BEND ±
 TWO PLACE DECIMAL ±.01
 THREE PLACE DECIMAL ±.005

	NAME	DATE
DRAWN	JK	9/17/2018
CHECKED		
ENG APPR.		
MFG APPR.		
Q.A.		

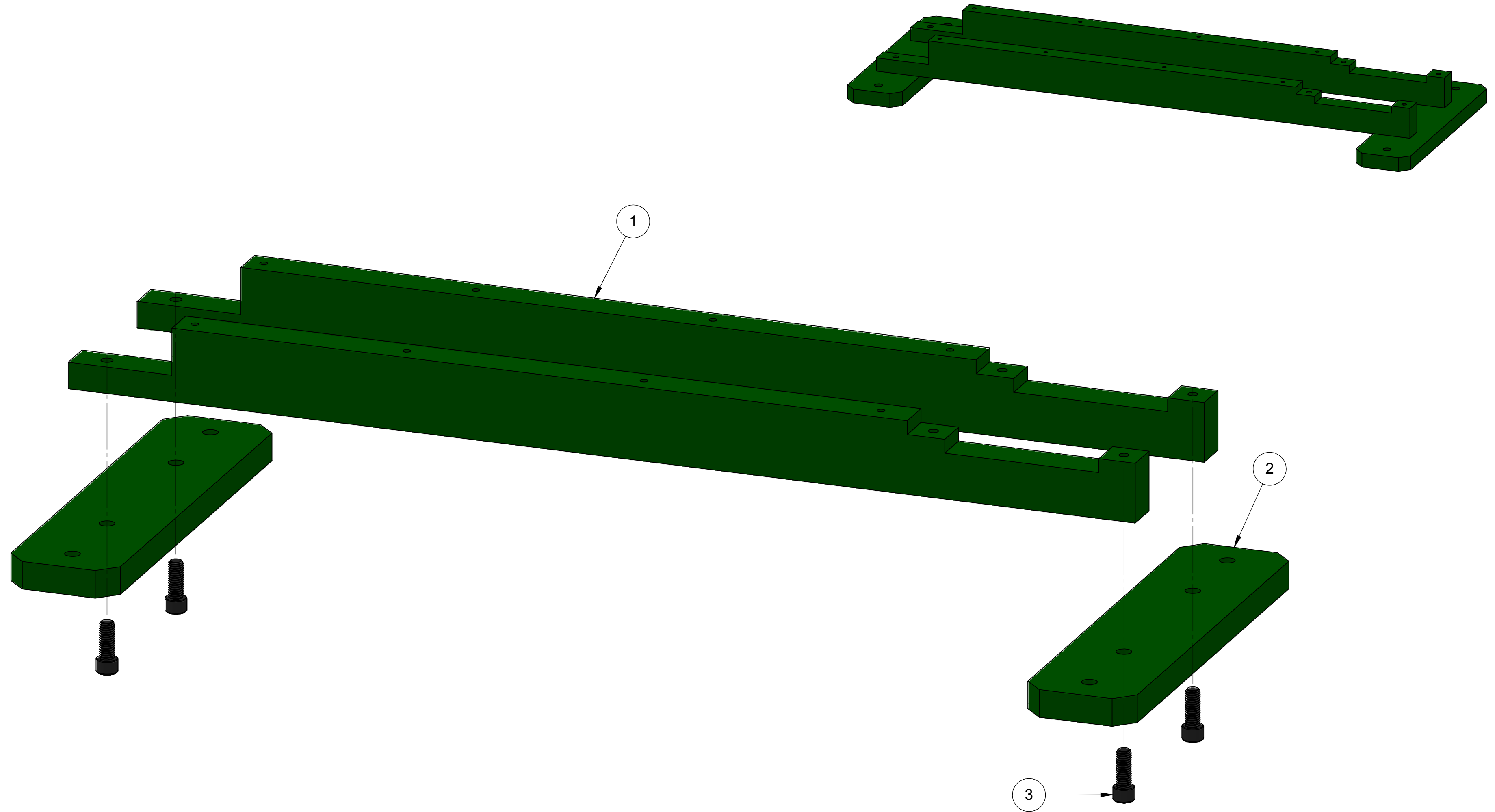
HORIZON SYSTEMS MACHINING
 9121 58TH PLACE
 KENOSHA, WI 53144
 PH: 262-605-1122
 FAX: 262-605-1198

THE INFORMATION CONTAINED IN THIS DRAWING IS THE SOLE PROPERTY OF HORIZON SYSTEMS MACHINING. ANY REPRODUCTION IN PART OR AS A WHOLE WITHOUT THE WRITTEN PERMISSION OF HORIZON SYSTEMS MACHINING IS PROHIBITED.

MATERIAL	TITLE:
FINISH	SIZE DWG. NO. REV
DO NOT SCALE DRAWING	C RAMS-2005 G
	SCALE: 1:12 SHEET 1 OF 2

REVISIONS			
REV.	DESCRIPTION	DATE	APPROVED

ITEM NO.	PART NUMBER	DESCRIPTION	QTY.
1	CHB-1001	LEG	2
2	CHB-1008	FOOT PAD	2
3	91251A624	SHCS BLACK OXIDE 3/8-16 X 1.000	4



RAMS-2005 CHEEK BENDER

DIMENSIONS ARE IN INCHES
 TOLERANCES:
 FRACTIONAL $\pm 1/16$
 ANGULAR: MACH \pm BEND \pm
 TWO PLACE DECIMAL $\pm .01$
 THREE PLACE DECIMAL $\pm .005$

	NAME	DATE
DRAWN	JK	9/17/2018
CHECKED		
ENG APPR.		
MFG APPR.		
Q.A.		

HORIZON SYSTEMS MACHINING
 9121 58TH PLACE
 KENOSHA, WI 53144
 PH: 262-605-1122
 FAX: 262-605-1198

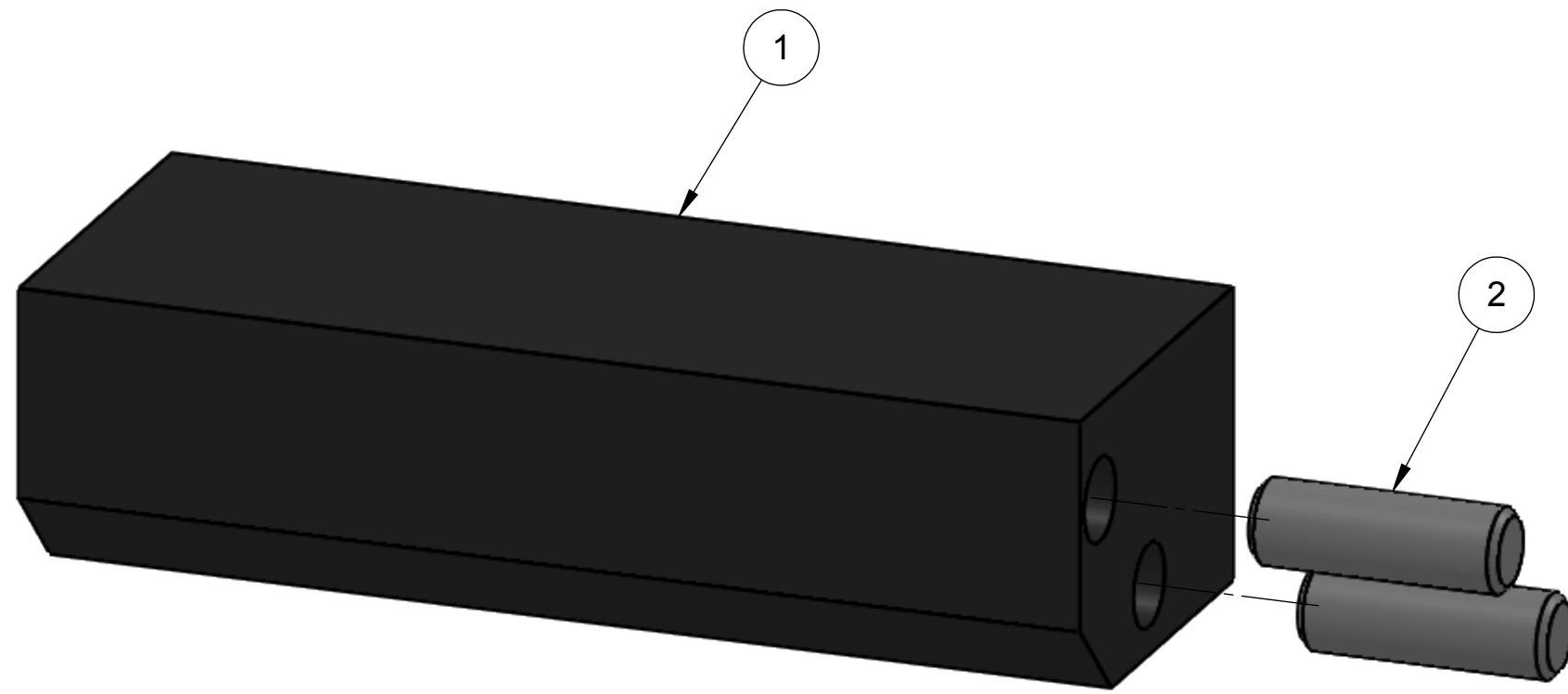
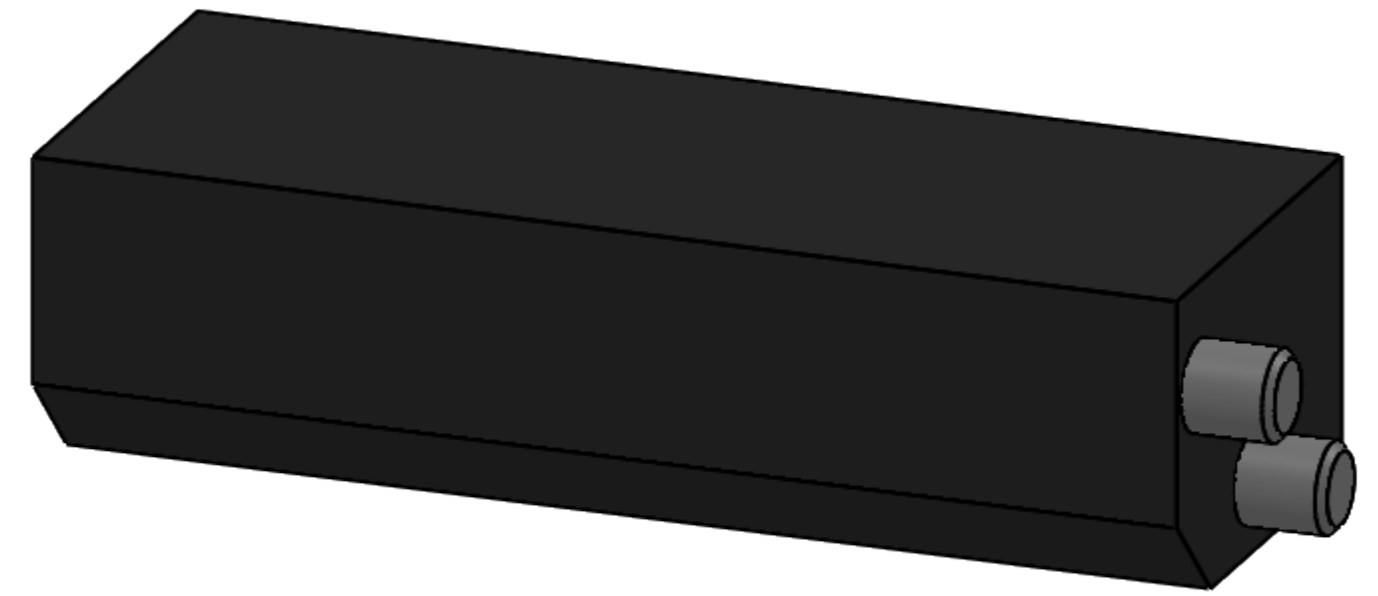
THE INFORMATION CONTAINED IN THIS DRAWING IS THE SOLE PROPERTY OF HORIZON SYSTEMS MACHINING. ANY REPRODUCTION IN PART OR AS A WHOLE WITHOUT THE WRITTEN PERMISSION OF HORIZON SYSTEMS MACHINING IS PROHIBITED.

MATERIAL	TITLE:	
FINISH	SIZE	DWG. NO.
DO NOT SCALE DRAWING	C	CHB-2005-1
	SCALE: 1:4	REV
		SHEET 1 OF 1

SIZE	DWG. NO.	REV
C	CHB-2005-1	
SCALE: 1:4	SHEET 1 OF 1	

ITEM NO.	PART NUMBER	DESCRIPTION	QTY.
1	CHB-1011	PIN BLOCK	1
2	98381A540	ALLOY STEEL DOWEL PIN 1/4 X 3/4	2

REVISIONS			
REV.	DESCRIPTION	DATE	APPROVED



RAMS-2005 CHEEK BENDER

DIMENSIONS ARE IN INCHES
 TOLERANCES:
 FRACTIONAL $\pm 1/16$
 ANGULAR: MACH \pm BEND \pm
 TWO PLACE DECIMAL $\pm .01$
 THREE PLACE DECIMAL $\pm .005$

	NAME	DATE
DRAWN	JK	9/17/2018
CHECKED		
ENG APPR.		
MFG APPR.		
Q.A.		

HORIZON SYSTEMS MACHINING
 9121 58TH PLACE
 KENOSHA, WI 53144
 PH: 262-605-1122
 FAX: 262-605-1198

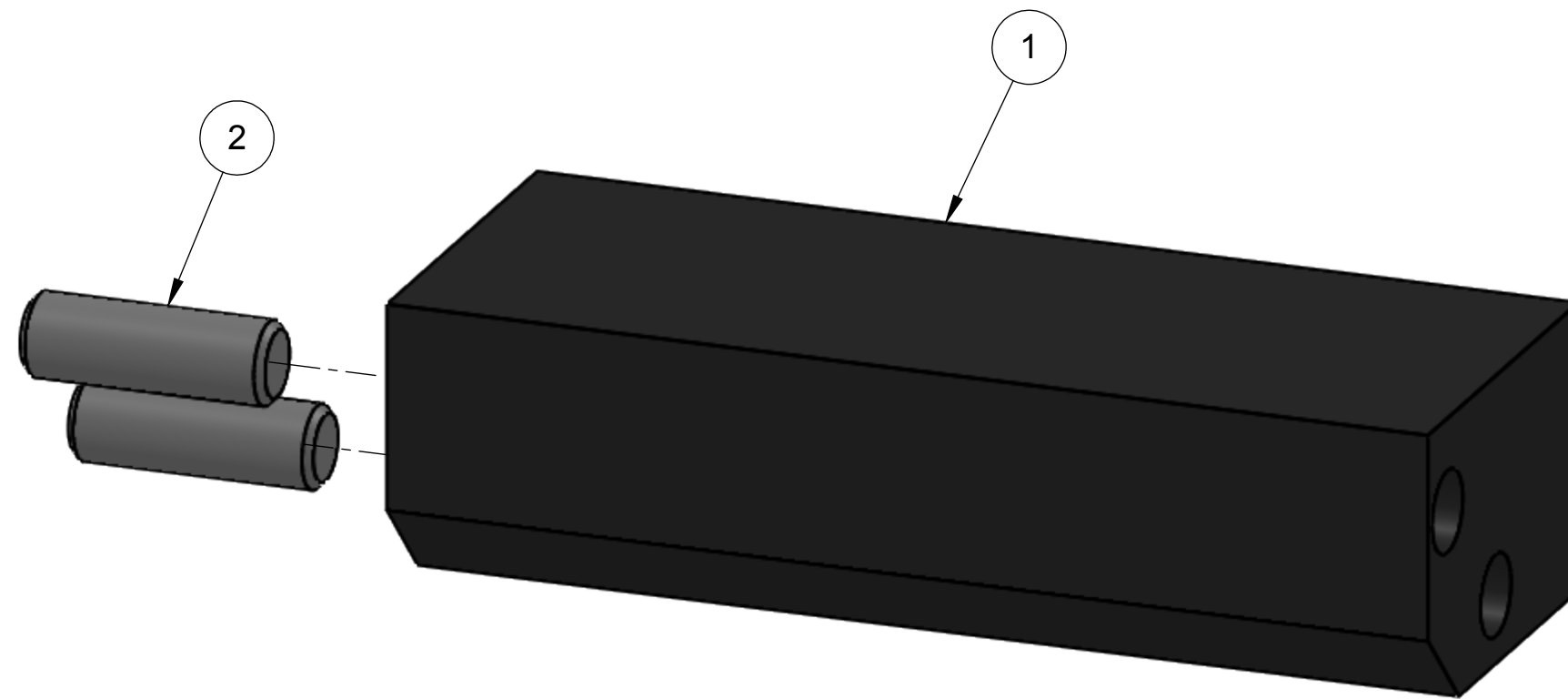
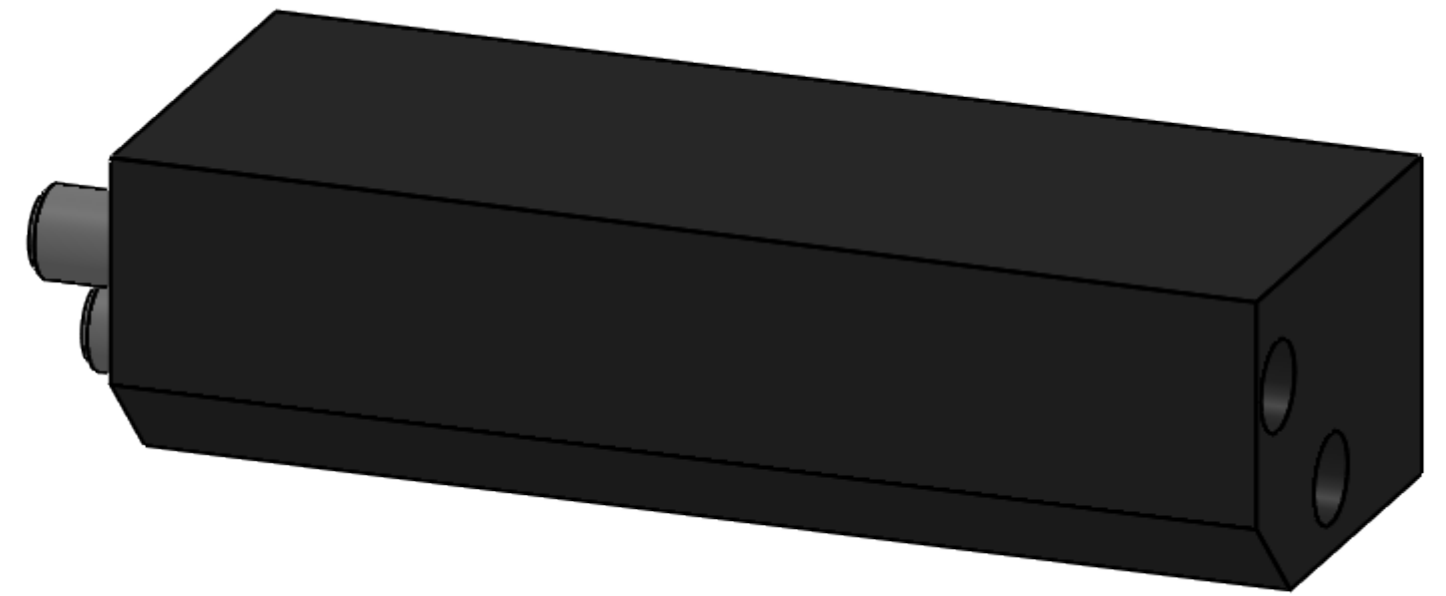
THE INFORMATION CONTAINED IN THIS DRAWING IS THE SOLE PROPERTY OF HORIZON SYSTEMS MACHINING. ANY REPRODUCTION IN PART OR AS A WHOLE WITHOUT THE WRITTEN PERMISSION OF HORIZON SYSTEMS MACHINING IS PROHIBITED.

MATERIAL	TITLE:	
FINISH	SIZE	DWG. NO.
DO NOT SCALE DRAWING	C	CHB-2005-2

REV	SCALE: 2:1	SHEET 1 OF 1
-----	------------	--------------

ITEM NO.	PART NUMBER	DESCRIPTION	QTY.
1	CHB-1011	PIN BLOCK	1
2	98381A540	ALLOY STEEL DOWEL PIN 1/4 X 3/4	2

REVISIONS			
REV.	DESCRIPTION	DATE	APPROVED

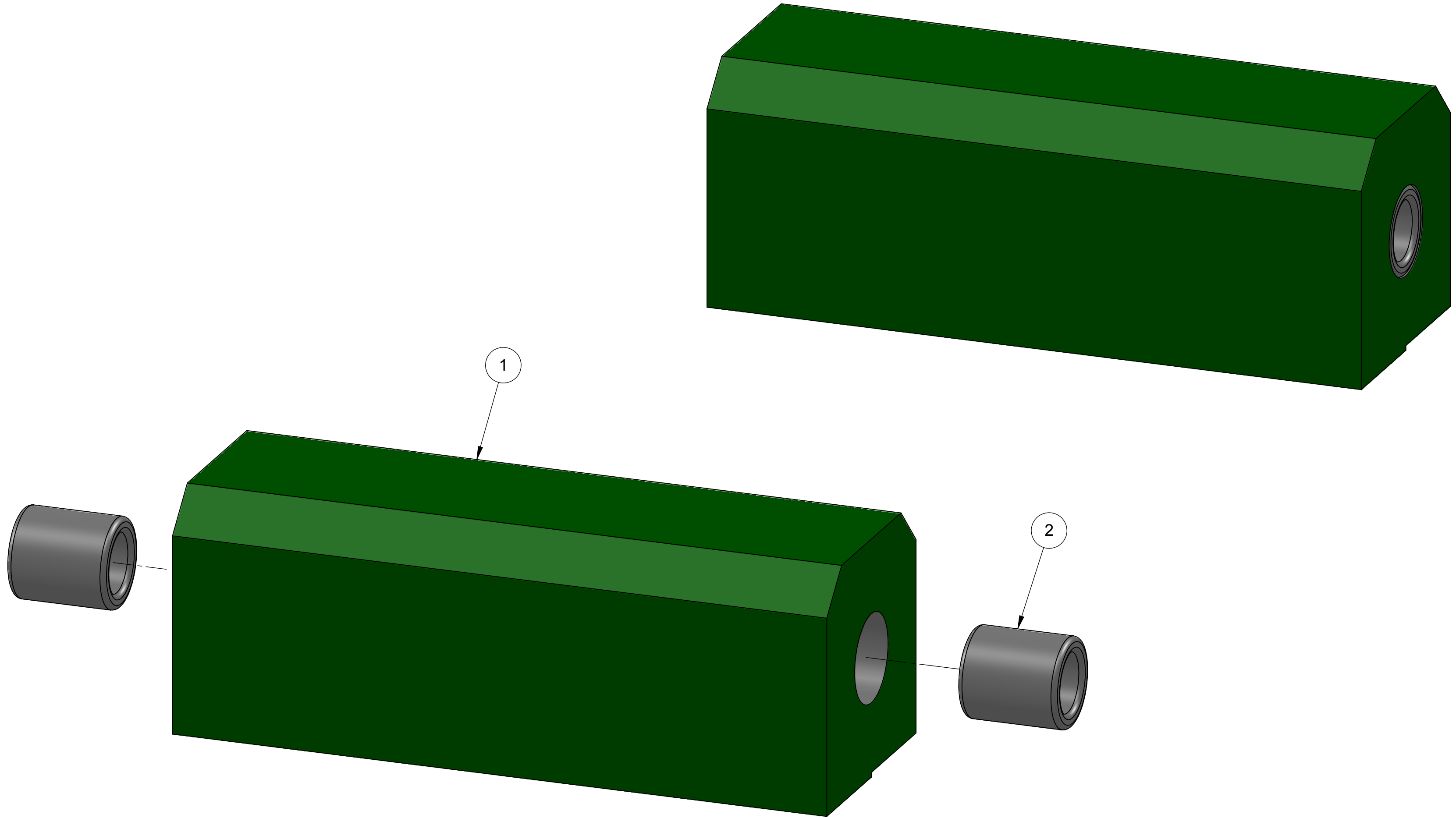


RAMS-2005 CHEEK BENDER

DIMENSIONS ARE IN INCHES TOLERANCES: FRACTIONAL $\pm 1/16$ ANGULAR: MACH \pm BEND \pm TWO PLACE DECIMAL $\pm .01$ THREE PLACE DECIMAL $\pm .005$	NAME	DATE	HORIZON SYSTEMS MACHINING 9121 58TH PLACE KENOSHA, WI 53144 PH: 262-605-1122 FAX: 262-605-1198		
	DRAWN	JK			9/17/2018
	CHECKED				
	ENG APPR.				
	MFG APPR.				
Q.A.					
THE INFORMATION CONTAINED IN THIS DRAWING IS THE SOLE PROPERTY OF HORIZON SYSTEMS MACHINING. ANY REPRODUCTION IN PART OR AS A WHOLE WITHOUT THE WRITTEN PERMISSION OF HORIZON SYSTEMS MACHINING IS PROHIBITED.	MATERIAL	TITLE:			
FINISH		SIZE	DWG. NO.	REV	
DO NOT SCALE DRAWING		C	CHB-2005-3		
		SCALE: 2:1		SHEET 1 OF 1	

ITEM NO.	PART NUMBER	DESCRIPTION	QTY.
1	CHB-1004	BEARING BLOCK	1
2	B-610	BEARING: 3/8 ID X 9/16 OD X 5/8 WIDE	2

REVISIONS			
REV.	DESCRIPTION	DATE	APPROVED

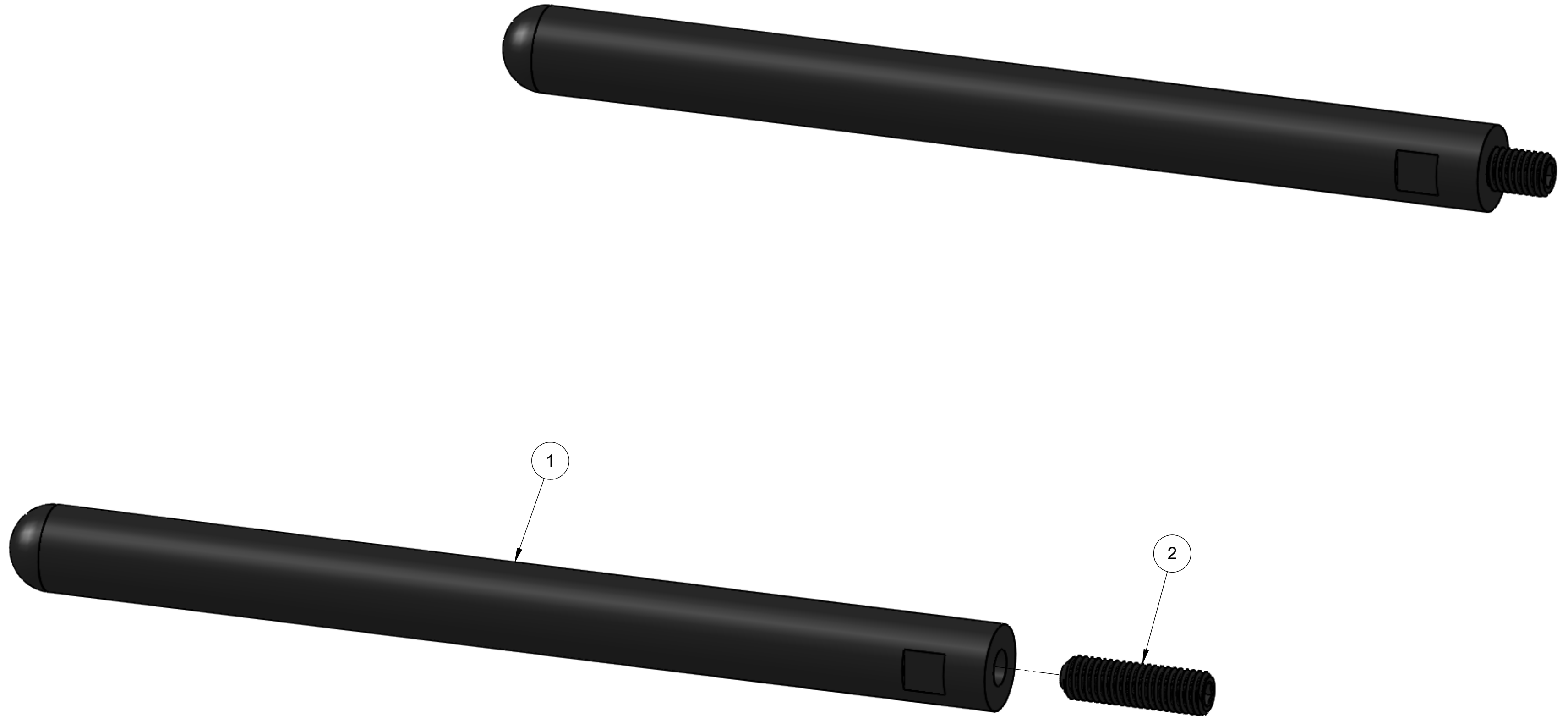


RAMS-2005 CHEEK BENDER

DIMENSIONS ARE IN INCHES TOLERANCES: FRACTIONAL $\pm 1/16$ ANGULAR: MACH \pm BEND \pm TWO PLACE DECIMAL $\pm .01$ THREE PLACE DECIMAL $\pm .005$		<table border="1"> <tr> <th>NAME</th> <th>DATE</th> </tr> <tr> <td>DRAWN JK</td> <td>9/17/2018</td> </tr> <tr> <td>CHECKED</td> <td></td> </tr> <tr> <td>ENG APPR.</td> <td></td> </tr> <tr> <td>MFG APPR.</td> <td></td> </tr> <tr> <td>Q.A.</td> <td></td> </tr> </table>	NAME	DATE	DRAWN JK	9/17/2018	CHECKED		ENG APPR.		MFG APPR.		Q.A.		HORIZON SYSTEMS MACHINING 9121 58TH PLACE KENOSHA, WI 53144 PH: 262-605-1122 FAX: 262-605-1198
NAME	DATE														
DRAWN JK	9/17/2018														
CHECKED															
ENG APPR.															
MFG APPR.															
Q.A.															
THE INFORMATION CONTAINED IN THIS DRAWING IS THE SOLE PROPERTY OF HORIZON SYSTEMS MACHINING. ANY REPRODUCTION IN PART OR AS A WHOLE WITHOUT THE WRITTEN PERMISSION OF HORIZON SYSTEMS MACHINING IS PROHIBITED.		MATERIAL: FINISH: DO NOT SCALE DRAWING	TITLE: <table border="1"> <tr> <th>SIZE</th> <th>DWG. NO.</th> <th>REV</th> </tr> <tr> <td>C</td> <td>CHB-2005-4</td> <td></td> </tr> </table>	SIZE	DWG. NO.	REV	C	CHB-2005-4							
SIZE	DWG. NO.	REV													
C	CHB-2005-4														
		SCALE: 1:1	SHEET 1 OF 1												

REVISIONS			
REV.	DESCRIPTION	DATE	APPROVED

ITEM NO.	PART NUMBER	DESCRIPTION	QTY.
1	CHB-1013	HANDLE	1
2	91375A718	BLACK OXIDE CUP POINT SET SCREW 1/2-13 X 1-3/4	1



RAMS-2005 CHEEK BENDER

DIMENSIONS ARE IN INCHES TOLERANCES: FRACTIONAL $\pm 1/16$ ANGULAR: MACH \pm BEND \pm TWO PLACE DECIMAL $\pm .01$ THREE PLACE DECIMAL $\pm .005$			NAME JK	DATE 9/17/2018	HORIZON SYSTEMS MACHINING 9121 58TH PLACE KENOSHA, WI 53144 PH: 262-605-1122 FAX: 262-605-1198
THE INFORMATION CONTAINED IN THIS DRAWING IS THE SOLE PROPERTY OF HORIZON SYSTEMS MACHINING. ANY REPRODUCTION IN PART OR AS A WHOLE WITHOUT THE WRITTEN PERMISSION OF HORIZON SYSTEMS MACHINING IS PROHIBITED.			DRAWN	CHECKED	
MATERIAL			ENG APPR.	MFG APPR.	
FINISH			Q.A.	TITLE:	
DO NOT SCALE DRAWING			SIZE C	DWG. NO. CHB-2005-5	
SCALE: 1:2				SHEET 1 OF 1	